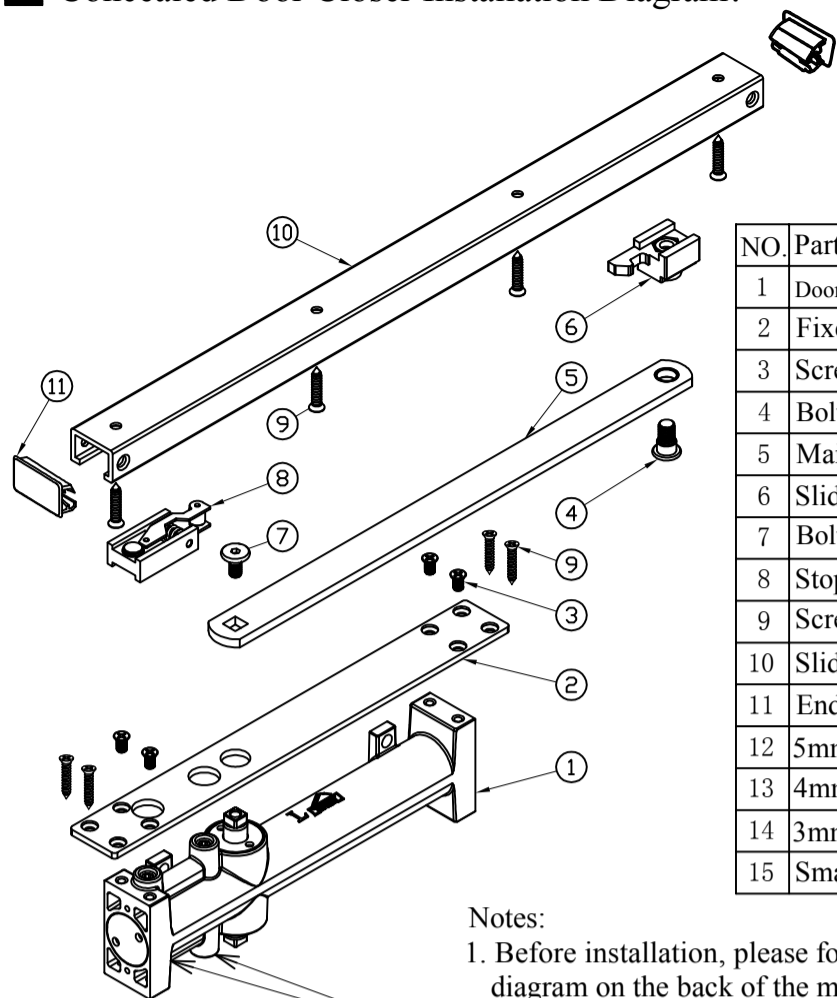


Installation Instruction

Concealed Door Closer Installation Diagram:

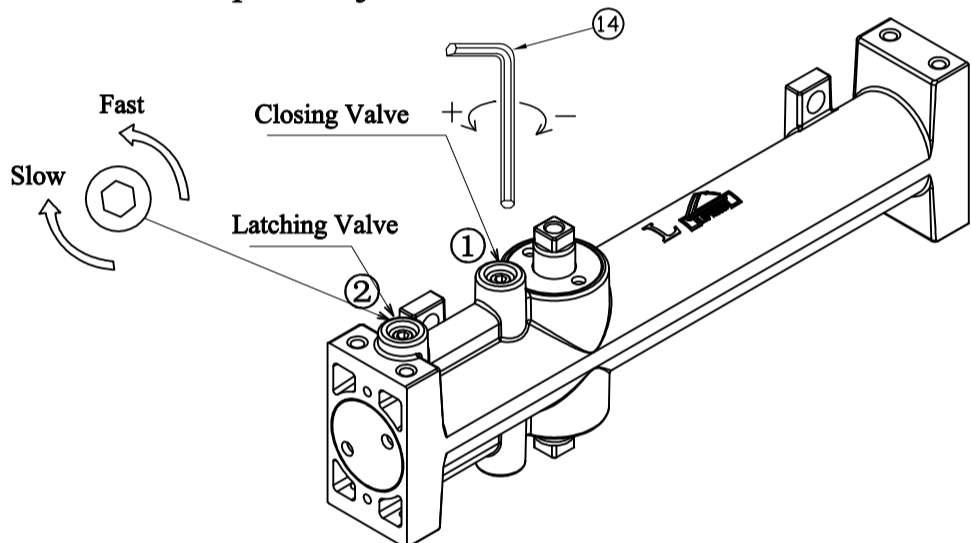


| NO. | Part Names | QTY |
|-----|------------------|-----|
| 1 | Door Closer Body | 1 |
| 2 | Fixed Plate | 1 |
| 3 | Screw(M5×9) | 8 |
| 4 | Bolt(M8×18) | 1 |
| 5 | Main Arm | 1 |
| 6 | Sliding Block | 1 |
| 7 | Bolt(M6×14.5) | 1 |
| 8 | Stop Block | 1 |
| 9 | Screw(ST4.8×25) | 8 |
| 10 | Slide Rail | 1 |
| 11 | End Cap | 2 |
| 12 | 5mm Allen Key | 1 |
| 13 | 4mm Allen Key | 1 |
| 14 | 3mm Allen Key | 1 |
| 15 | Small Spanner | 1 |

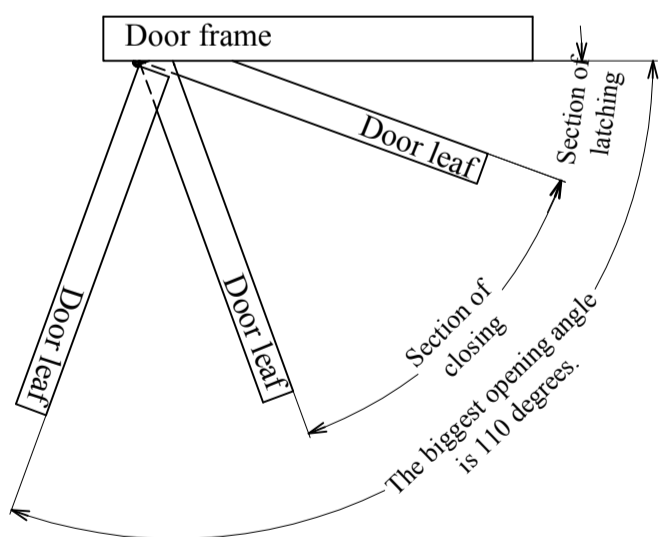
Notes:

1. Before installation, please follow the installation diagram on the back of the manual to confirm the opening direction of the door.
2. The adjustment valve at the bottom must be locked before installation.

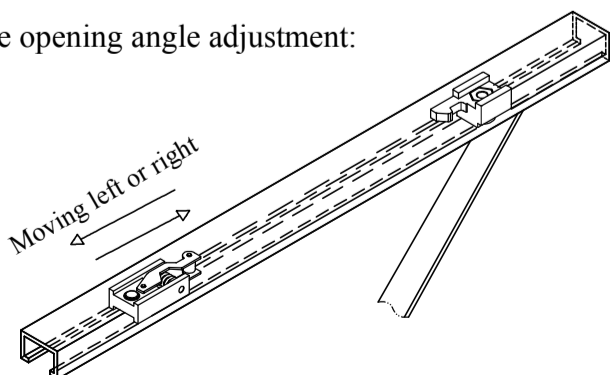
Method of Speed Adjustment:



1. ① is the closing control valve while, ② is the latching control valve.
2. The valve turns counterclockwise to increase the speed and turns clockwise to decrease the speed.

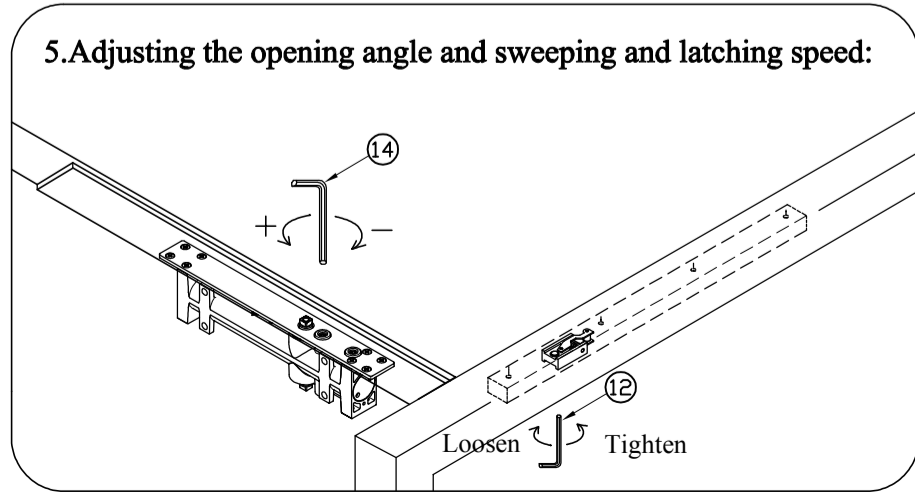
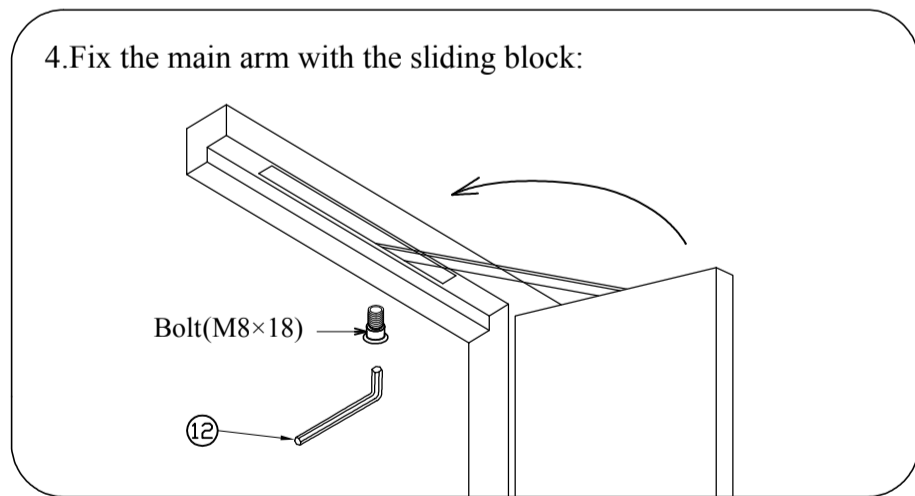
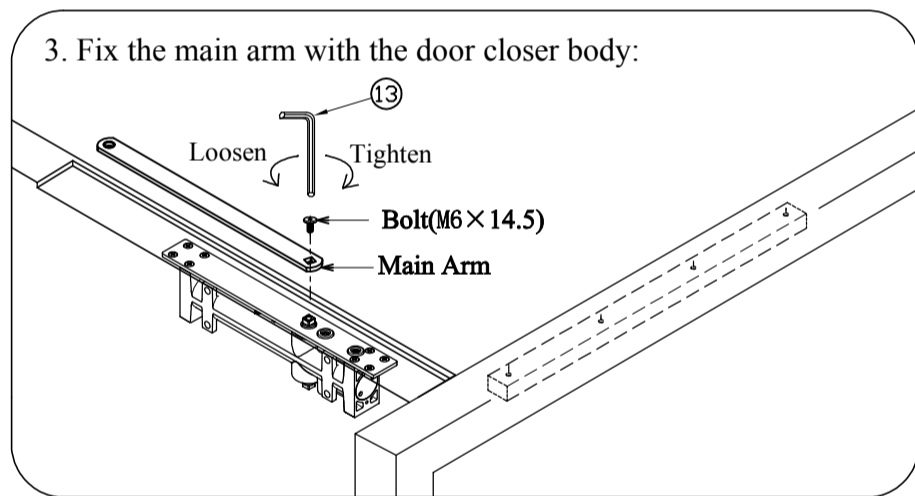
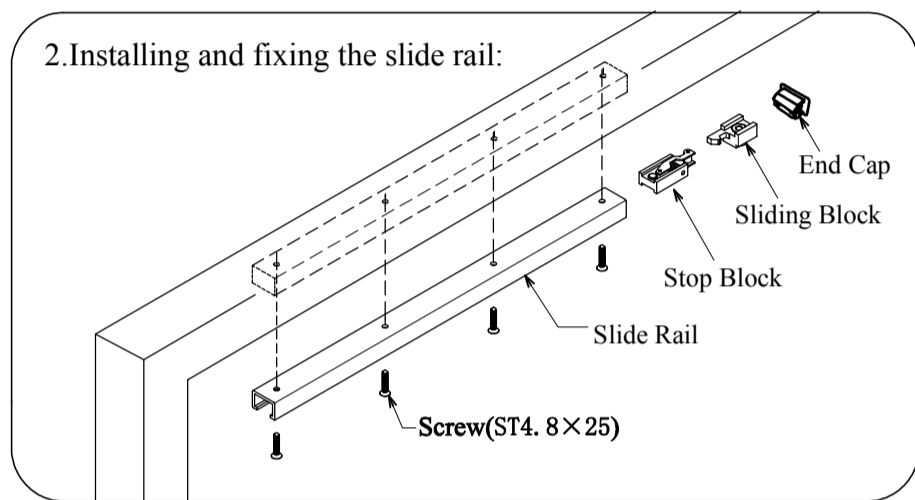
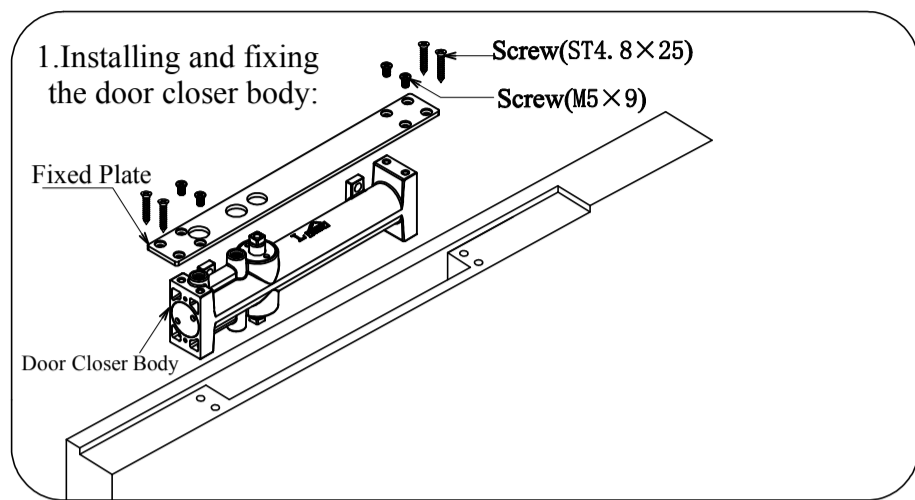


Method of the opening angle adjustment:



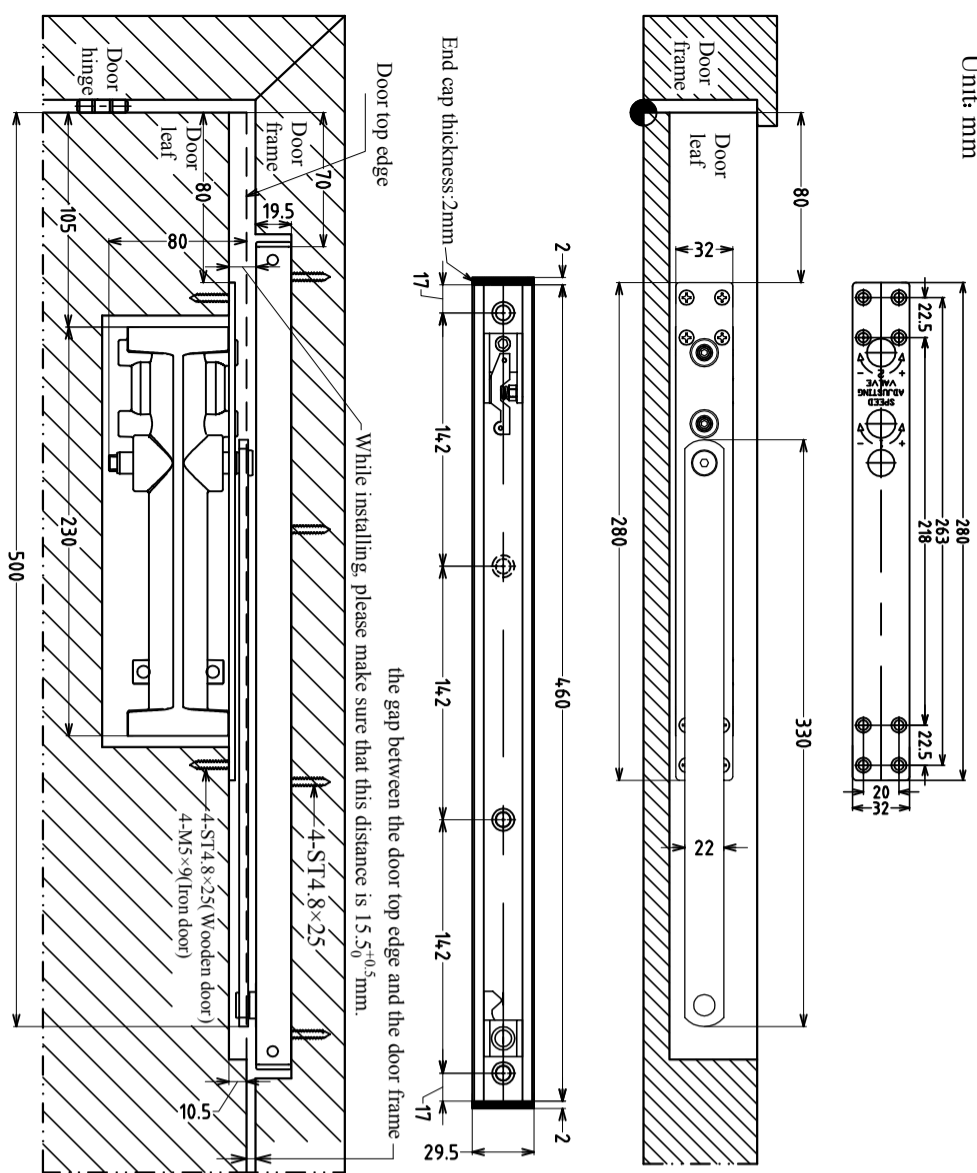
1. Moving the stop block left or right can adjust the opening angle. The biggest opening angle is 110°.
2. The stop block is used to determine the opening angle. Once the stop block is fixed, the door can not be opened to an angle larger than the opening angle or the door will be damaged.

- The door closer is suitable for the left and right open door.
- Method of Installation

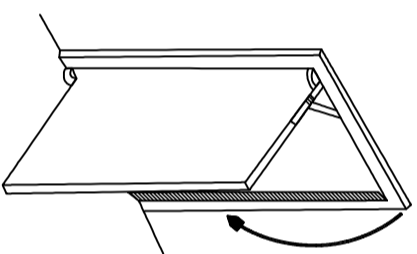


● Left open door installation diagram when the door closer body in the door leaf:

Unit: mm

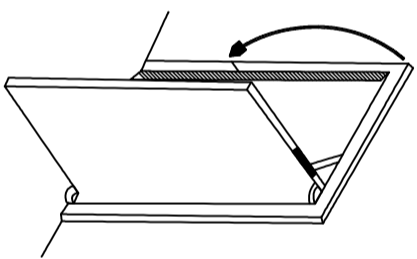


(Outside) Left open door



(Inside) Right open door

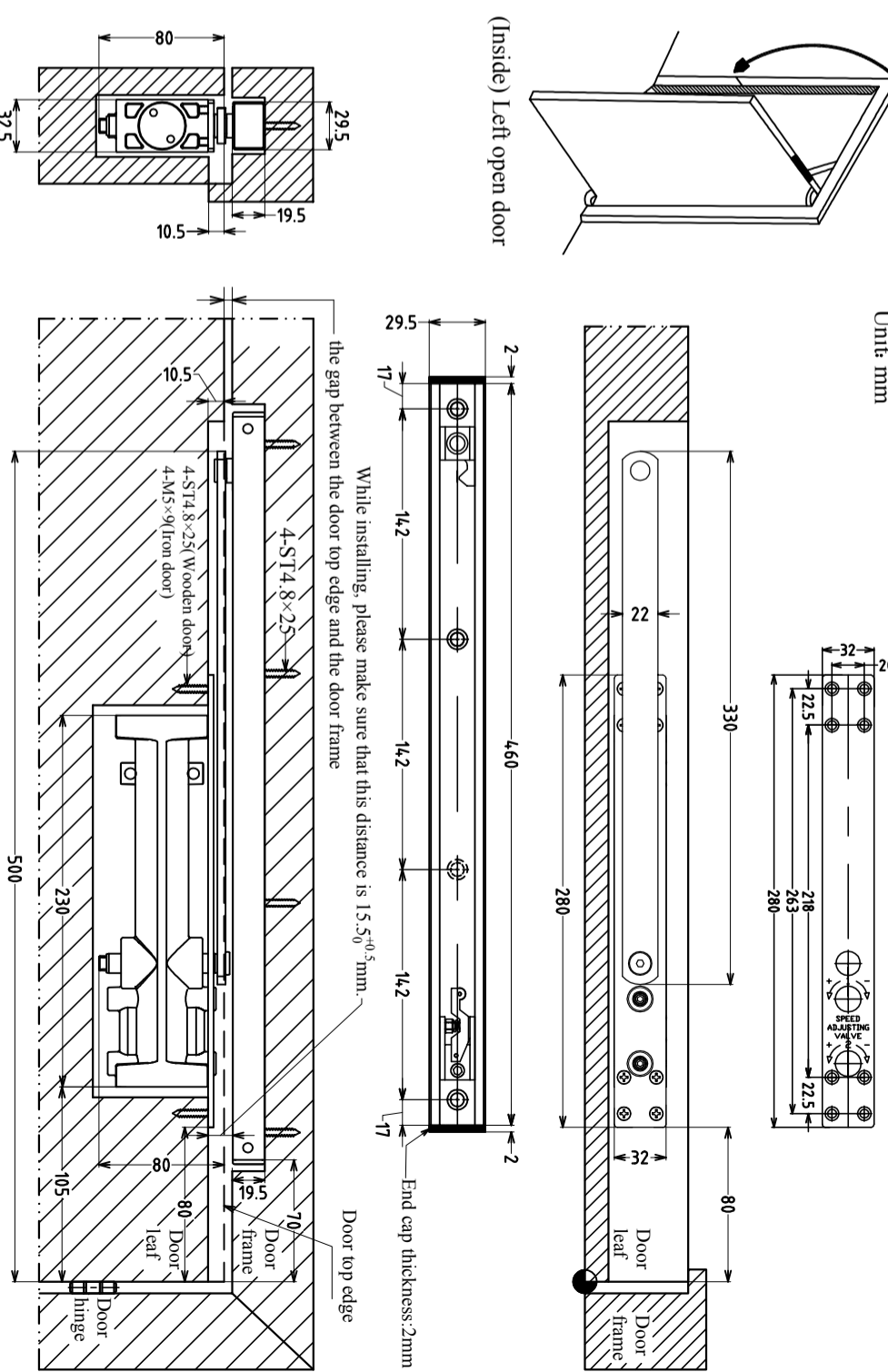
(Outside) Right open door



(Inside) Left open door

● Right open door installation diagram when the door closer body in the door leaf:

Unit: mm



● Right open door installation diagram when the door closer body in the door frame:

Unit: mm

